

WINDOW SYSTEM **ENNVISION-Security**

SECURITY WINDOW SYSTEM

The ENNVISION-Security sash window system is a fixed insert with a removable sash, designed for use in behavioural and mental healthcare applications for maximum patient safety. The system is designed to be inserted into the ENNWALL unitized curtain wall system or the ENNVELOP wall system and may also be suitable for retrofit applications when inserted into existing framing.



Compatible with Ennova Systems



Suitable for Retrofit Applications



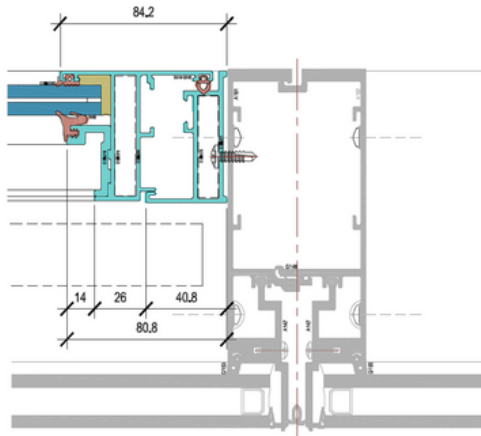
Tested to 2,000 lbs per AAMA 501.8



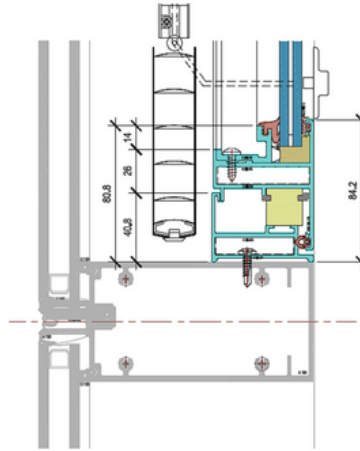
Customizable, Minimizes Sight Lines

ENNOVA

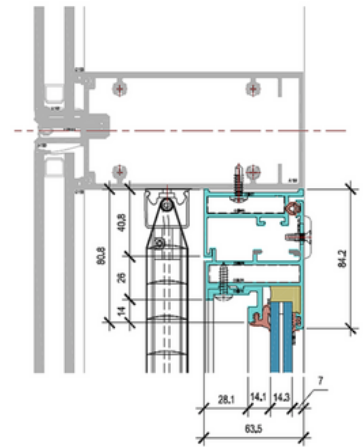
Sull Sash - Jamb



Sull Sash - Sill



Sull Sash - Head



About ENNVISION- Security

The ENNVISION-Security window system is thoughtfully designed for use in healthcare settings. The system performs above typical standards, and minimizes sight lines while maintaining the performance of the system.

Features:

- Going above typical system standards, the unit is tested to 2,000 lbs, based on the AAMA 501.8-14 standard test method to determine resistance to human impact.
- Customizable to meet the needs of the system chassis.
- The anti-ligature/tamper-proof hardware has been designed around safety and protection against harm. The system includes multiple safety locks.
- Integrated blinds can be shop installed.



Excellence beyond measure. Innovation without compromise.

ENNVISION Compatibility

The ENNVISION-Security window system was designed to be fully compatible with other products in Ennova's catalogue, including the ENNVELOP medium and large format wall system and the ENNWALL curtain wall system. It may also be suitable for retrofit applications.



ENNVELOP Pre-Fabricated Wall System

The ENNVELOP wall system revolutionizes exterior facades by offering fully customizable pre-fabricated rainscreen panels in medium and large formats.

Photo: Limberlost Place - Toronto, ON



ENNWALL-70 Unitized Curtain Wall

The ENNWALL-70 curtain wall system is a high-performance, tailor-made, pre-engineered system, designed to meet the needs of any project.

Photo: Entrada - Los Angeles, CA

NOTABLE PROJECTS

ENNVISION-Security



CAMH - Toronto, ON



Michael Garron Hospital - Toronto, ON



West Park Healthcare Centre - Toronto, ON

Applications Include

Hospitals
Long-Term Care Facilities
Behavioural Care Institutions
Mental Health Facilities

Our Clients Include

Architects
Engineers
Construction Managers
Project Owners



620 Sprucewood Ave, Windsor, ON N9C 0B2
519-969-1740
solutions@ennovafacades.com
ennovafacades.com

ENNOVA